

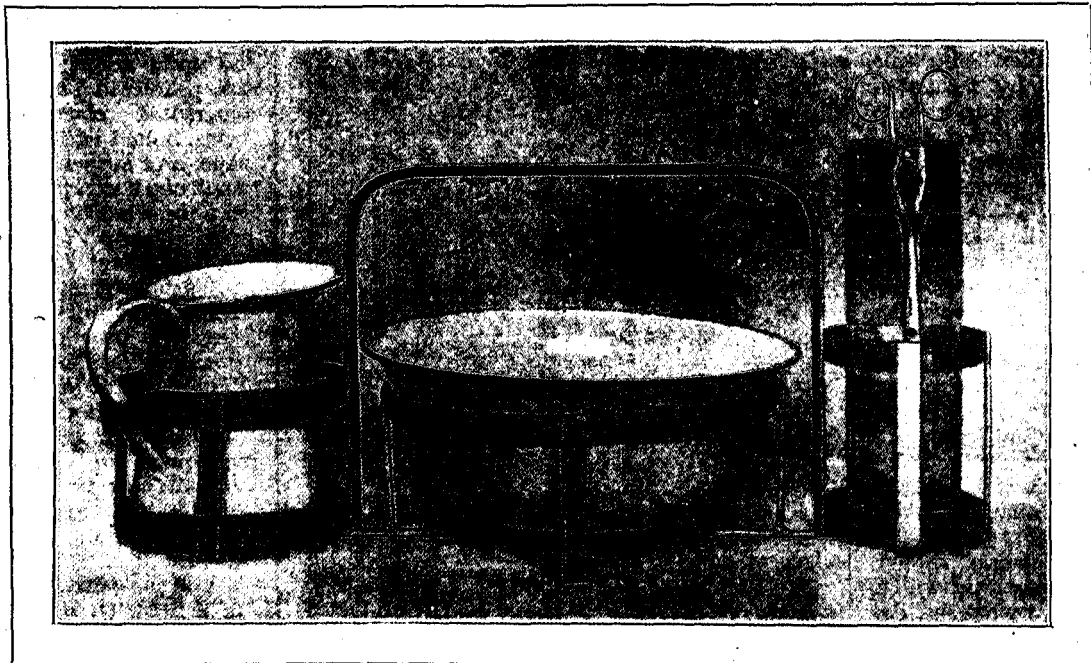
irrigations and by sponging with sponges grasped by the sponge holder, thus eliminating the need of disinfection of the hands. The time required to do a post-partum dressing from the placing of the screens about the bed until the nurse has finished is about fifteen minutes.

PRINCESS CHRISTIAN HAMMERSMITH DAY NURSERY.

The annual report of the Princess Christian Hammersmith Day Nursery expresses satisfaction that the crèches are now recognised by the Board of Education as a factor in elementary education. This particular crèche meets a great need in the district, and it is only to be regretted that daily applications are made which have to be refused. If subscriptions and donations are

ALCOHOLISM IN RELATION TO WOMEN AND CHILDREN.

In "The Drink Problem," edited by Dr. T. N. Kelynack, and published by Methuen & Co., Ltd., Mrs. Scharlieb, M.D., writes of Ante-Natal Influences. "The development and well-being of each individual depends very largely upon his environment, but still more upon the condition, mental, moral, and physical, of the parents to whom he is born. We have been accustomed to think that certain diseases, such as phthisis, were hereditary, and it is only lately that we have been awakened to the fact that children are born, not with a distinct heritage of consumption, but with a certain peculiarity of tissue rendering them more liable to invasion by the bacillus of tubercle, and



A NEAR VIEW OF THE DRESSING CARRIAGE.

forthcoming, it is contemplated to enlarge the sphere of usefulness by developing a new crèche. To quote from the report, "Now that, more than ever, lives must be saved for the nation, and not only saved but made healthy, morally and physically, the crèches are a public necessity." We heartily endorse this statement, and are sure that no more patriotic work can be undertaken than the preservation of infant life. The Nursery is at 135, Blythe Rd., Hammersmith, W.

PENALTY FOR ACTING AS MIDWIFE.

At Doncaster recently Mary Warren was fined £4 for acting as a midwife without holding the certificate of the Central Midwives Board. The defendant had been a registered midwife but was struck off the Roll.

we have learnt that to a great extent it lies in our power to prevent the organism from such invasion and so to strengthen the tissues that they shall not be unduly liable to attack. Much the same argument applies to alcoholism. The child of the female drunkard is not born with a direct alcoholic tendency, but is probably born with ill-nourished tissues, and especially with a poorly-developed brain and nervous system, which render him more liable than a healthy individual to fall under the influence of drink. In addition to this such a child is seldom properly nourished during infancy and childhood; his mother's condition prevents her affording him healthy milk. In addition to all this, the character and example of an inebriate mother conduce most powerfully to the development of an alcoholic tendency in her offspring."

[previous page](#)

[next page](#)